

336

HYDRAULIC EXCAVATOR



Engine Power
Operating Weight

232 kW (311 hp)
36 200 kg (79,800 lb)

Cat® C9.3B engine meets China Nonroad Stage III and Brazil MAR-1 emission standards, equivalent to U.S. EPA Tier 3 and EU Stage IIIA.



NEXT GENERATION EXCAVATORS

Cat® Next Generation Excavators offer you more choices than ever for your business.

- + MORE MODEL OPTIONS
- + MORE STANDARD TECHNOLOGIES
- + MORE PRICE POINTS

Ready to help you make your business stronger, Cat Next Generation Excavators give you new ways to get the most work done at the lowest cost – so you put more money in your pocket.



THE CAT® 336

MOVING THE STANDARD HIGHER

The Cat 336 raises the bar for efficiency and fuel economy in this size class. With the industry's highest level of standard factory technology, a cab made for operator comfort, plus lower fuel and maintenance costs, the 336 will help make your operation more productive and profitable.



INCREASE OPERATING EFFICIENCY UP TO 45%¹

The Cat 336 offers the industry's highest level of standard factory-equipped technology, including Cat GRADE with 2D, GRADE with Assist, and PAYLOAD.

INCREASE FUEL EFFICIENCY UP TO 15%²

A precise combination of lower engine speed and large hydraulic pump pressure and flow delivers more work per unit of fuel.

LOWER MAINTENANCE COSTS UP TO 15%³

Extended maintenance intervals increase uptime and reduce costs.

**LOAD UP
WITH**

**15% MORE FUEL
EFFICIENCY**

THAT'S 12 MORE TRUCKLOADS WITH THE
336 NEXT GENERATION EXCAVATOR.



336D2

266 L (70 GAL) =
83 LOADED TRUCKS



336

83 LOADED TRUCKS × 15%
EFFICIENCY IMPROVEMENT =
12 ADDITIONAL TRUCKLOADS

SCENARIO:

Cat® Excavators loading Cat 730 trucks using
266 L (70 gal) of fuel each day.

¹ Operator efficiency gains compared to traditional grading methods.

² Compared to the 336D2.

³ Compared to the 336D2. Cost reduction based on 12,000 hours of operation.



STANDARD CAT TECHNOLOGIES

GETS JOBS DONE FASTER
WITH LESS REWORK

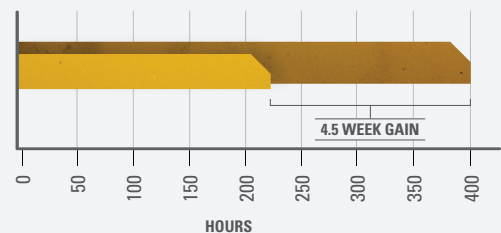
Cat Technology gives you the edge. Operators of all experience levels will dig, load, and grade with more confidence, speed, and accuracy. The result?

Better productivity and lower costs.



WHAT WOULD YOU DO WITH 4.5 MORE WEEKS?

45% GAIN WITH TECHNOLOGY
means same amount of work done faster



PREVIOUS YEAR:

● **USING TRADITIONAL GRADING METHODS**

400 hours/year, grading with stakes and checkers

CURRENT YEAR:

● **USING CAT 336 WITH CAT TECHNOLOGY**

220 hours/year, with standard Cat GRADE



INCREASE EFFICIENCY UP TO 45% WITH CAT CONNECT TECHNOLOGY

STANDARD, SIMPLE-TO-USE TECHNOLOGIES INCLUDE:



STANDARD CAT GRADE WITH 2D

Cat GRADE with 2D helps operators reach grade faster. Operators cut and fill to exact specifications without overcutting. You can program up to four of your most commonly used target depth and slope offsets so you can get to grade with ease – a real time saver on the jobsite. Best of all, no grade checkers are needed so the work area is safer.



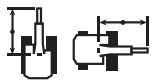
STANDARD CAT GRADE WITH ASSIST

Automated boom, stick, and bucket movements deliver more accurate cuts with less effort. The operator simply sets the depth and slope in the monitor and activates single-lever digging.



STANDARD CAT PAYLOAD

Cat PAYLOAD technology delivers precise load targets with on-the-go weighing, which helps prevent over/underloading and maximizes efficiency. Automated tracking helps manage production and lower cost. You can even take payload data with you. The monitor's USP port lets you download your results from one shift all the way up to 30 days of work so can manage your progress without needing an internet connection or VisionLink® subscription.



STANDARD LIFT ASSIST

Lift Assist quickly calculates the actual load you are lifting and compares it to the rated load the excavator is capable of handling. Visual and auditory alerts tell you if you are within safe working range or need to take action to avoid tipping.

AVAILABLE OPTIONAL UPGRADES

Cat Grade with Advanced 2D and Cat Grade with 3D increase productivity and expand grading capabilities. GRADE with Advanced 2D adds in-field design capabilities through an additional 254 mm (10 inch) high-resolution touchscreen monitor. GRADE with 3D adds GPS and GLONASS positioning for pinpoint accuracy. Plus it's easier than ever to connect to 3D services like Trimble Connected Community or Virtual Reference Station with the excavator's built-in communication technology.

CAT LINK TECHNOLOGY

TAKES THE GUESSWORK OUT OF MANAGING YOUR EQUIPMENT

Cat Link telematics technology helps take the complexity out of managing your jobsites – by gathering data generated by your equipment, materials, and people and serving it up to you in customizable formats.



PRODUCT LINK™

Product Link™ collects data automatically and accurately from your assets – any type and any brand. Information such as location, hours, fuel usage, productivity, idle time, maintenance alerts, diagnostic codes, and machine health can be viewed online through web and mobile applications.

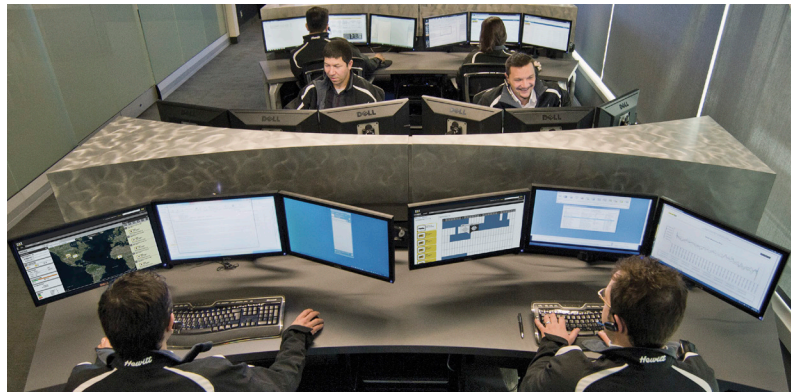
VISIONLINK®

Access information anytime, anywhere with VisionLink – and use it to make informed decisions that boost productivity, lower costs, simplify maintenance, and improve safety and security on your jobsite. With different subscription level options, your Cat dealer can help you configure exactly what you need to connect your fleet and manage your business without paying for extras you don't want. Subscriptions are available with cellular or satellite reporting (or both).

Remote Services is a suite of technologies that improve your jobsite efficiency.

Remote Troubleshoot allows your Cat dealer to perform diagnostic testing on your connected machine remotely, pinpointing potential issues while the machine is in operation. Remote Troubleshoot ensures the technician arrives with the correct parts and tools the first time, eliminating additional trips to save you time and money.

Remote Flash updates on-board software without a technician being present, potentially reducing update time by as much as 50%. You can initiate the update when convenient, increasing your overall operating efficiency.



The **Cat App** helps you manage your assets – at any time – right from your smartphone. You can see your fleet location, hours, and other information you need to see. You will get critical alerts for required maintenance, and you can even request service from your local Cat dealer.

Caterpillar releases products, services and technologies in each region at different time intervals. Please verify with your local Cat dealer for technology availability and specifications.

CAB TAKES THE HARD OUT OF WORK

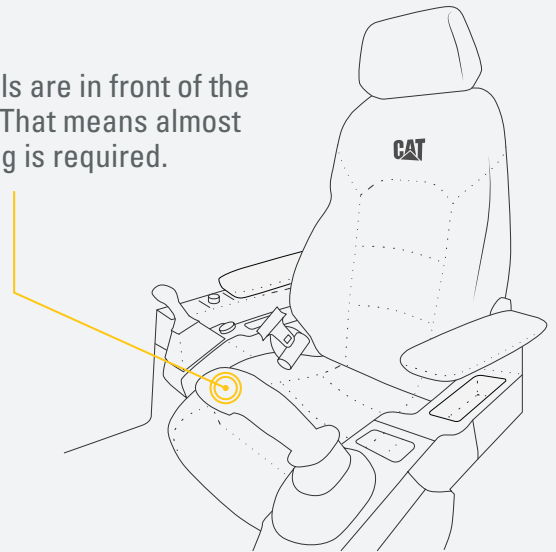
Sites where excavators typically work are rugged and challenging. That's why it's important that the 336 cab protects the operator as much as possible from the fatigue, stresses, sounds, and temperatures of the job.

WE'VE GOT **YOUR BACK.**

BACK PAIN IS ONE OF THE MOST COMMON REASONS PEOPLE MISS WORK.*

CAB:

All controls are in front of the operator. That means almost no twisting is required.



OLD CAB: 2,000+ twists a year to reach controls in back of cab that can strain your back.

ASSUME 1 TWIST PER HOUR
1 TWIST × 8-HOUR WORKDAY = 8 TWISTS PER DAY
8 TWISTS × 5 WORKDAYS PER WEEK = 40 TWISTS PER WEEK
40 TWISTS × 52 WEEKS PER YEAR = **2,080 TWISTS PER YEAR**

*SOURCE: [HTTPS://WWW.NINDS.NIH.GOV/DISORDERS/PATIENT-CAREGIVER-EDUCATION/FACT-SHEETS/LOW-BACK-PAIN-FACT-SHEET](https://www.ninds.nih.gov/disorders/patient-caregiver-education/fact-sheets/low-back-pain-fact-sheet)



SEAT AND JOYSTICK CONSOLE REDUCE FATIGUE

Comfort and efficiency of movement keep operators productive and alert all shift long. The standard seat is wide and adjustable for operators of virtually any size. The Deluxe cab package includes a heated air suspension seat; the Premium seat is both heated and cooled.



TOUCHSCREEN MONITOR

Most machine settings can be controlled through the high-resolution touchscreen monitor. It offers 42 languages and is easy to reach from the seat – no twisting or turning.



SMART MODE

Smart Mode, one of three power settings, automatically adjusts engine and hydraulic power for the highest fuel efficiency – less power for tasks such as swinging and more power for digging. Operators can set and store their power mode preference using Operator ID; owners can lock in the mode they want their operators to use to help manage fuel consumption.



CUSTOMIZABLE JOYSTICKS

Joystick function can be customized through the monitor. Joystick pattern as well as response can be set to match operator preference. All preferences are saved with operator ID and restored at log in.



KEYLESS PUSH START

The 336 uses a keyless push-button engine start. This adds security for the machine by using Operator ID codes to limit and track machine access. Codes can be entered manually, via an optional Bluetooth® key fob, or smartphone app.



A QUIET, SAFE WORKSPACE BUILDS OPERATOR CONFIDENCE

ISO-CERTIFIED ROPS CAB

The ISO-certified ROPS cab is sound-suppressed and sealed. The windows and lower front profile of the machine give outstanding visibility to the work area without the strain of constantly leaning forward.

ALL-AROUND VISIBILITY

A standard rearview camera keeps operators aware of their surroundings at all times. An optional 360° visibility feature is also available.

EASY ACCESS, CONNECTIVITY AND STORAGE

Convenience features include Bluetooth integrated radio, USB ports for charging and phone connectivity, 12V DC outlets and AUX port, storage in rear, overhead and console compartments, and cup and bottle holders.



SAFETY FEATURES

LOOK OUT FOR YOUR PEOPLE AND YOUR EQUIPMENT

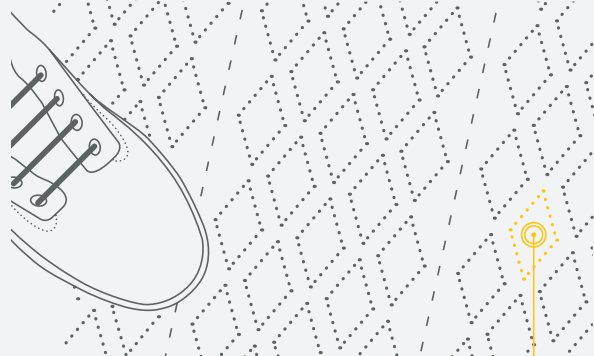
Routine maintenance checks can be performed faster, easier, and safer with ground-level access to the air precleaner, the fuel water separator, fuel tank water and sediment drains, and cooling system coolant level check.

KEEP YOUR EXCAVATOR SECURE

Use your PIN code on the monitor, the optional Bluetooth key fob, or your smartphone to enable push-button start.

1,148 WAYS TO STAY SAFE.

FACT: **SLIPPING** IS ONE OF THE
BIGGEST CONTRIBUTORS
TO WORKPLACE INJURIES.*



OUR ANTI-SKID PLATES FEATURE

1,000+ INDIVIDUAL PERFORATIONS
FOR BETTER TRACTION

*SOURCE: [HTTPS://WWW.OSHA.GOV/DTE/GRANT_MATERIALS/FY07/SH-16625-07/SLIPSTRIPSFALLS.PPT](https://www.osha.gov/dte/grant_materials/fy07/sh-16625-07/slipstripsfalls.ppt)



PROTECTION IN ALL DIRECTIONS



E-WALL SWING



E-WALL FORWARD



E-WALL CAB PROTECTION



E-WALL CEILING



E-WALL FLOOR

STANDARD 2D E-FENCE TECHNOLOGY

Whether you are using a bucket or hammer, standard 2D E-fence automatically stops excavator motion using boundaries you set in the monitor for the entire working envelope – above, below, sides and front. E-fence protects equipment from damage and reduces fines related to zoning or underground utility damage. Automatic boundaries even help prevent operator fatigue by reducing overswinging or digging.



LOWER MAINTENANCE COSTS UP TO 15%

With extended maintenance intervals, you get more done at a lower cost compared to the 336D2. Consolidated filter locations make service faster. Hydraulic, air, and fuel tank filters have increased capacity and longer life.

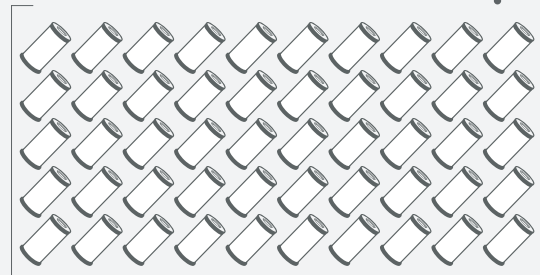
KEY MAINTENANCE COST REDUCTIONS INCLUDE:

- + Consolidated filter locations to reduce service time.
- + Oil and fuel filters with extended maintenance intervals.
- + Improved hydraulic filter with higher dirt holding capacity.
- + Advanced Cat air filter with double the dust holding capacity of the previous filter.



WHAT WILL YOU DO WITH YOUR SAVINGS?

REPLACE **50 FEWER FILTERS**
OVER 12,000 HOURS OF OPERATION.



THAT SAVES YOU **UP TO 15%**
IN MAINTENANCE COSTS*



*SOURCE: INTERNAL NEXT GENERATION PRODUCT SUPPORT
MAINTENANCE COST COMPARISON

INCREASE YOUR PRODUCTIVITY AND PROFIT WITH CAT ATTACHMENTS

You can easily expand the performance of your machine by utilizing any of the variety of Cat Attachments. Each Cat Attachment is designed to fit the weight and horsepower of Cat Excavators for improved performance, safety, and stability.

BUCKETS



HYDRAULIC HAMMERS



PREVENT HAMMER WEAR AND TEAR

Turn on through the monitor and the hammer will automatically stop after 30 seconds of continuous firing, preventing both tool and excavator from overworking.

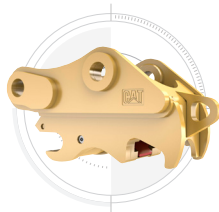
GRAPPLES



MULTI-PROCESSORS



QUICK COUPLERS



RAKES



RIPPERS



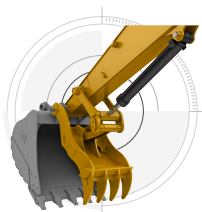
SECONDARY PULVERIZERS



SHEARS



THUMBS

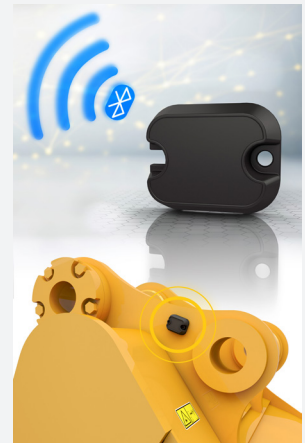


VIBRATORY PLATE COMPACTORS



ATTACHMENT TRACKING MADE EASY

The Cat PL161 Attachment Locator is a Bluetooth device that makes finding your attachments and other gear quick and easy. The excavator's onboard Bluetooth reader or Cat App on your phone will locate the device automatically.



Save more time and energy with the available work tool recognition feature. A simple shake of the attached tool confirms its identity; it also ensures all the attachment settings are correct so you can get to work quickly and efficiently.

TECHNICAL SPECIFICATIONS

See *cat.com* for complete specifications.

| ENGINE | | | |
|---|---|----------------|--|
| Engine Model | C9.3B | | |
| Engine Power – ISO 9249 | 232 kW | 311 hp | |
| Engine Power – ISO 14396 | 234 kW | 314 hp | |
| Bore | 115 mm | 5 in | |
| Stroke | 149 mm | 6 in | |
| Displacement | 9.3 L | 568 in³ | |
| HYDRAULIC SYSTEM | | | |
| Main System – Maximum Flow – Implement | 558 L/min (279 × 2 pumps) 147 gal/min (74 × 2 pumps) | | |
| Maximum Pressure – Equipment – Implement | 35 000 kPa | 5,076 psi | |
| Maximum Pressure – Equipment – Lift Mode | 38 000 kPa | 5,511 psi | |
| Maximum Pressure – Travel | 35 000 kPa | 5,076 psi | |
| Maximum Pressure – Swing | 29 400 kPa | 4,264 psi | |
| SWING MECHANISM | | | |
| Swing Speed | 8.75 rpm | | |
| Maximum Swing Torque | 144 kN·m | 106,228 lbf·ft | |
| WEIGHTS | | | |
| Operating Weight* | 36 200 kg | 79,800 lb | |
| Long undercarriage, HD R3.2DB (10'6") stick, HD 1.88 m³ (2.46 yd³) bucket, 600 mm (24") triple grouser shoes, 6.8 mt (14,991 lb) counterweight. | | | |
| *Add 1000 kg (2,300 lb) for Mass configuration. | | | |
| SERVICE REFILL CAPACITIES | | | |
| Fuel Tank Capacity | 600 L | 158.5 gal | |
| Cooling System | 40 L | 10.5 gal | |
| Engine Oil (with filter) | 32 L | 8.5 gal | |
| Swing Drive (each) | 18 L | 4.8 gal | |
| Final Drive (each) | 8 L | 2.1 gal | |
| Hydraulic System (including tank) | 373 L | 98.5 gal | |
| Hydraulic Tank | 161 L | 42.5 gal | |

| DIMENSIONS | | | | |
|---|---|------------|-------------------------------------|------------|
| Boom | HD Reach Boom 6.5 m (21'4") | | Mass Boom 6.18 m (20'3") | |
| Stick | HD Reach Stick 3.2 m (10'6") | | Mass Stick 2.55 m (8'4") | |
| Bucket | HD 1.88 m³ (2.46 yd³) | | HD 2.41 m³ (3.16 yd³) | |
| Shipping Height (top of cab) | 3170 mm | 10'4" | 3170 mm | 10'4" |
| Handrail Height | 3160 mm | 10'4" | 3160 mm | 10'4" |
| Shipping Length | 11 170 mm | 36'6" | 10 890 mm | 35'8" |
| Tail Swing Radius | 3530 mm | 11'6" | 3530 mm | 11'6" |
| Counterweight Clearance | 1250 mm | 4'1" | 1250 mm | 4'1" |
| Ground Clearance | 510 mm | 1'8" | 510 mm | 1'8" |
| Track Length | 5030 mm | 16'6" | 5030 mm | 16'6" |
| Track Length to Center of Rollers | 4040 mm | 13'3" | 4040 mm | 13'3" |
| Track Gauge | 2590 mm | 8'5" | 2590 mm | 8'5" |
| Transport Width – 600 mm (24") Shoes | 3190 mm | 10'5" | 3190 mm | 10'5" |
| WORKING RANGES AND FORCES | | | | |
| Boom | HD Reach Boom 6.5 m (21'4") | | Mass Boom 6.18 m (20'3") | |
| Stick | HD Reach Stick 3.2 m (10'6") | | Mass Stick 2.55 m (8'4") | |
| Bucket | HD 1.88 m³ (2.46 yd³) | | HD 2.41 m³ (3.16 yd³) | |
| Maximum Digging Depth | 7520 mm | 24'8" | 6670 mm | 21'10" |
| Maximum Reach at Ground Line | 11 050 mm | 36'3" | 10 280 mm | 33'8" |
| Maximum Cutting Height | 10 300 mm | 33'9" | 9990 mm | 32'9" |
| Maximum Loading Height | 7080 mm | 23'2" | 6600 mm | 21'7" |
| Minimum Loading Height | 2580 mm | 8'5" | 2900 mm | 9'6" |
| Maximum Depth Cut for 2440 mm (8'0") Level Bottom | 7360 mm | 24'1" | 6500 mm | 21'3" |
| Maximum Vertical Wall Digging Depth | 5660 mm | 18'6" | 4650 mm | 15'3" |
| Bucket Digging Force (ISO) | 211 kN | 47,460 lbf | 265 kN | 59,570 lbf |
| Stick Digging Force (ISO) | 167 kN | 37,430 lbf | 191 kN | 42,890 lbf |

STANDARD & OPTIONAL EQUIPMENT

Standard and optional equipment may vary. Consult your Cat dealer for details.

| CAB | STANDARD | OPTIONAL |
|--|----------|----------|
| ROPS, sound suppression | • | |
| High-resolution 203 mm (8") LCD touchscreen monitor | • | |
| High-resolution 254 mm (10") LCD touchscreen monitor | | • |
| Mechanically adjustable seat suspension | • | |
| Heated seat with air-adjustable suspension (<i>Deluxe only</i>) | • | |
| ENGINE | STANDARD | OPTIONAL |
| Cold start block heaters | | • |
| Three selectable modes: Power, Smart, Eco | • | |
| Automatic engine speed control | • | |
| Up to 3300 m (10,830 ft) altitude capability | • | |
| 52° C (126° F) high-ambient cooling capacity | • | |
| Hydraulic reverse fan | | • |
| -18° C (0° F) cold start capability | • | |
| -32° C (-25° F) cold start capability | | • |
| Double element air filter with integrated precleaner | • | |
| Remote disable | • | |
| Biodiesel capability up to B20 | • | |
| HYDRAULIC SYSTEM | STANDARD | OPTIONAL |
| Boom and stick regeneration circuit | • | |
| Electronic main control valve | • | |
| Heavy lift mode | | • |
| Automatic hydraulic oil warm up | • | |
| Reverse swing damping valve | • | |
| Automatic swing parking brake | • | |
| High performance hydraulic return filter | • | |
| Two speed travel | • | |
| Bio hydraulic oil capability | • | |
| Fine swing | | • |
| Single one-way auxiliary circuit | | • |
| Combined two-way auxiliary circuit | | • |
| Combined two-way auxiliary circuit with hammer return filter | | • |
| Medium-pressure auxiliary circuit | | • |
| Quick coupler circuit | | • |
| UNDERCARRIAGE AND STRUCTURES | STANDARD | OPTIONAL |
| Long undercarriage | • | |
| Towing eye on base frame | • | |
| 6.8 mt (14,991 lb) counterweight | | • |
| 7.56 mt (16,667 lb) counterweight | | • |
| 600 mm (24") double grouser, HD double grouser, triple grouser track shoes | | • |
| 700 mm (28") triple grouser track shoes | | • |
| 800 mm (31") triple grouser track shoes | | • |

| BOOMS AND STICKS | STANDARD | OPTIONAL |
|--|----------|----------|
| 6.18 m (20'3") Mass boom | | • |
| 6.5 m (21'4") HD Reach boom | | • |
| 2.55 m (8'4") stick | | • |
| 2.8 m (9'2") HD stick | | • |
| 3.2 m (10'6") HD stick | | • |
| 3.9 m (12'10") stick | | • |
| ELECTRICAL SYSTEM | STANDARD | OPTIONAL |
| Maintenance-free 1,000 CCA batteries (x2) | • | |
| Centralized electrical disconnect switch | • | |
| LED chassis light, LH and RH boom lights, cab lights | • | |
| CAT TECHNOLOGY | STANDARD | OPTIONAL |
| Cat Product Link | • | |
| Cat GRADE with 2D | • | |
| Cat GRADE with Advanced 2D | | • |
| Cat GRADE with 3D | | • |
| Cat GRADE with Assist | • | |
| Cat PAYLOAD | • | |
| Cat E-Fence | • | |
| Lift Assist | • | |
| Remote Services capability | • | |
| SERVICE AND MAINTENANCE | STANDARD | OPTIONAL |
| Grouped location of engine oil and fuel filters | • | |
| Scheduled Oil Sampling (S-O-S SM) ports | • | |
| QuickEvac TM maintenance ready | | • |
| Electric refueling pump with automatic shutoff | | • |
| SAFETY AND SECURITY | STANDARD | OPTIONAL |
| Caterpillar One Key security system | • | |
| Lockable external tool/storage box | • | |
| Lockable door, fuel, and hydraulic tank locks | • | |
| Lockable fuel drain compartment | • | |
| Service platform with anti-skid plate and recessed bolts | • | |
| RH handrail and hand hold (ISO 2867:2011 compliant) | • | |
| Standard visibility mirror package | • | |
| Signaling/warning horn | • | |
| Ground-level secondary engine shutoff switch | • | |
| Rearview camera and right-hand-side mirror | • | |
| 360° visibility | | • |

Not all features are available in all regions. Please check with your local Cat dealer for specific offering availability in your area.

For additional information, refer to the Technical Specifications brochures for the 336 GC and 336 models available at www.cat.com or your Cat dealer.



For more complete information on Cat products, dealer services and industry solutions, visit us on the web at www.cat.com

© 2019 Caterpillar. All Rights Reserved.

VisionLink is a trademark of Trimble Navigation Limited, registered in the United States and in other countries.

Materials and specifications are subject to change without notice. Featured machines in photos may include additional equipment. See your Cat dealer for available options.

CAT, CATERPILLAR, LET'S DO THE WORK, their respective logos, "Caterpillar Yellow," the "Power Edge" and Cat "Modern Hex" trade dress as well as corporate and product identity used herein, are trademarks of Caterpillar and may not be used without permission.
www.cat.com www.caterpillar.com

AEXQ2369-02
Replaces AEXQ2369-01
Build Number: 07B

